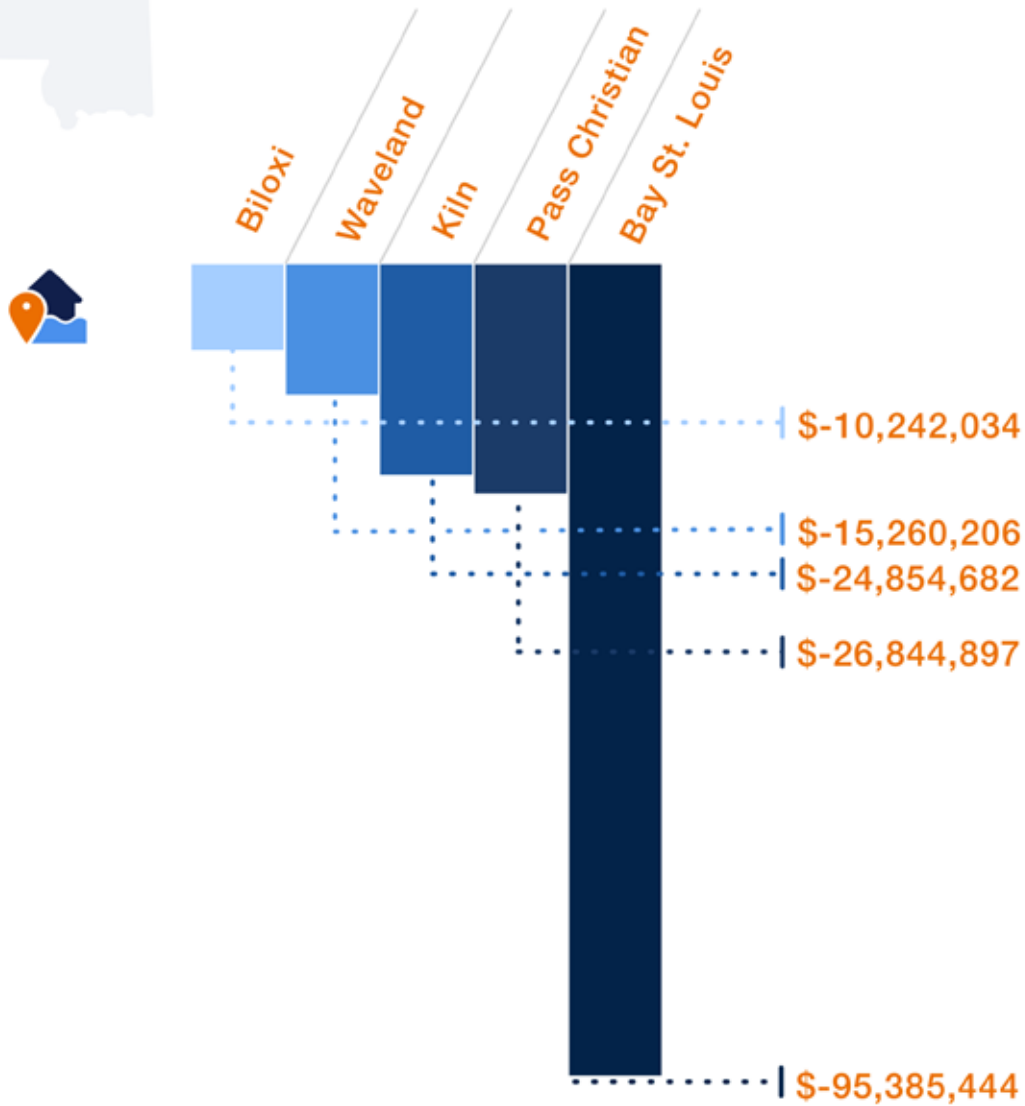


## Mississippi: Top 5 Hardest Hit Cities



## Mississippi: Significantly Impacted Homes

City: Kiln  
Street: Pontiac Dr  
Relative Value Loss: **-\$216,374**

City: Kiln  
Street: Shawnee St  
Relative Value Loss: **-\$221,450**

City: Bay St. Louis  
Street: Deer Dr  
Relative Value Loss: **-\$204,993**

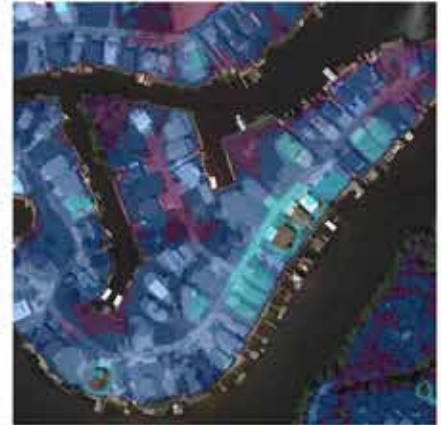
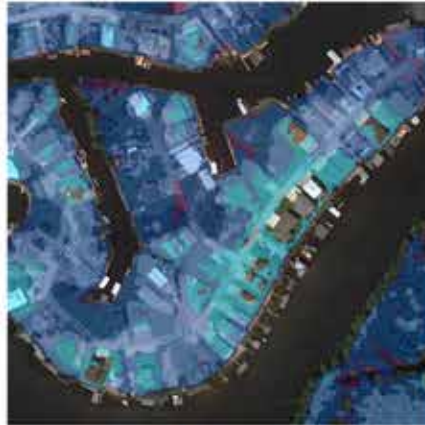
## Significantly Impacted Homes

Highest Annual  
Tidal Flooding: **Today**

Highest Annual  
Tidal Flooding: **In 15 Years**

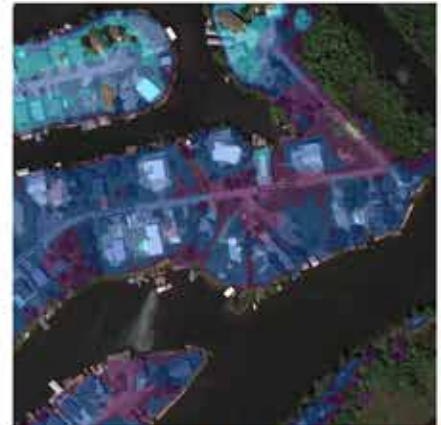
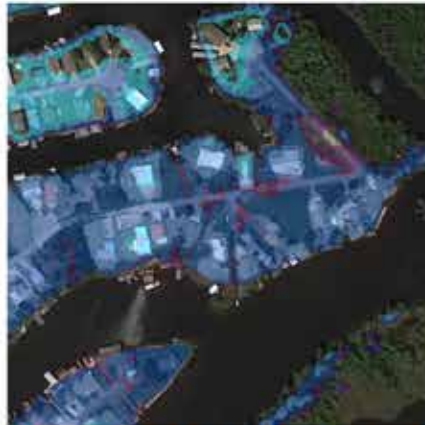
City: **Kiln**  
Street: **Pontiac Dr**

Depth of Flooding (feet)  
■ <1 ■ 1 - 2 ■ 2 - 3 ■ 3+



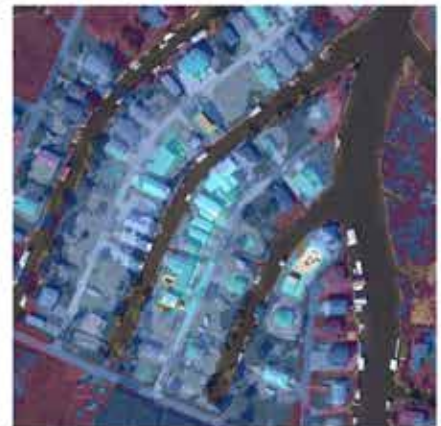
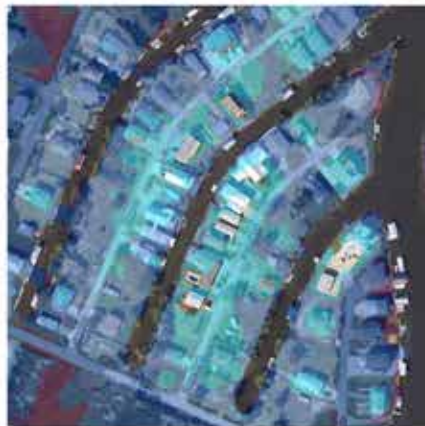
City: **Kiln**  
Street: **Shawnee St**

Depth of Flooding (feet)  
■ <1 ■ 1 - 2 ■ 2 - 3 ■ 3+

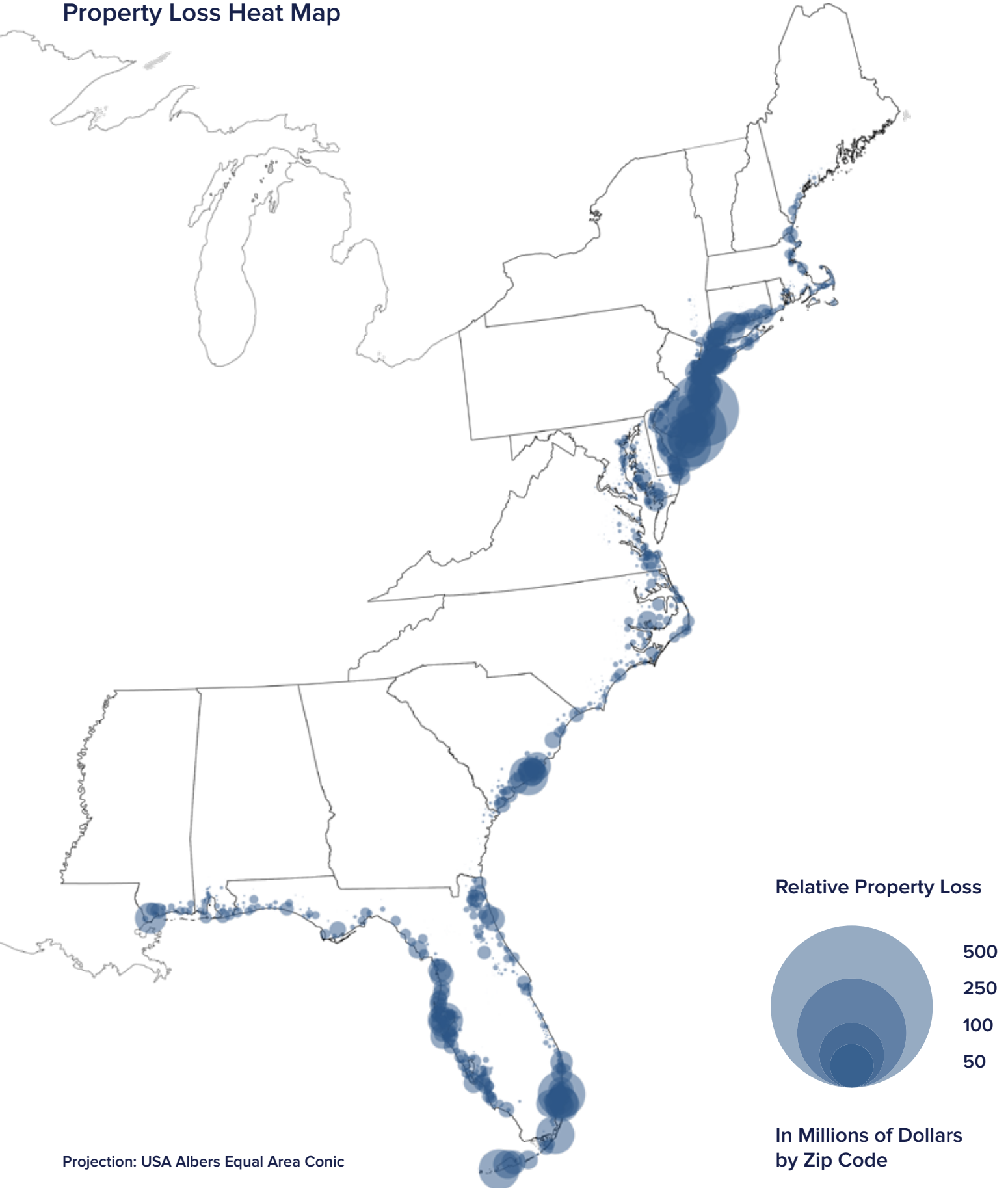


City: **Bay St. Louis**  
Street: **Deer Dr**

Depth of Flooding (feet)  
■ <1 ■ 1 - 2 ■ 2 - 3 ■ 3+



## Property Loss Heat Map



Projection: USA Albers Equal Area Conic

**STATE RANK BY TOTAL LOSS**

	<b>STATE</b>	<b>LOSS</b>	<b>PERIOD ANALYZED</b>
1	Florida	-\$5,422,165,140	2005 - 2017
2	New Jersey	-\$4,522,768,463	2005 - 2017
3	New York	-\$1,301,333,910	2005 - 2017
4	South Carolina	-\$1,111,154,304	2008 - 2017
5	Connecticut	-\$915,873,888	2005 - 2017
6	North Carolina	-\$582,251,970	2005 - 2017
7	Maryland	-\$555,725,150	2005 - 2017
8	Delaware	-\$299,530,451	2005 - 2017
9	Virginia	-\$280,290,166	2006 - 2017
10	Massachusetts	-\$273,392,714	2005 - 2017
11	Mississippi	-\$263,764,081	2005 - 2017
12	Alabama	-\$157,868,992	2005 - 2017
13	Texas	-\$76,390,582	2005 - 2017
14	Maine	-\$69,865,575	2005 - 2017
15	Rhode Island	-\$44,715,623	2005 - 2017
16	Georgia	-\$15,268,577	2005 - 2017
17	New Hampshire	-\$15,166,359	2005 - 2017
18	Pennsylvania	-\$10,148,959	2005 - 2017